

Parameter

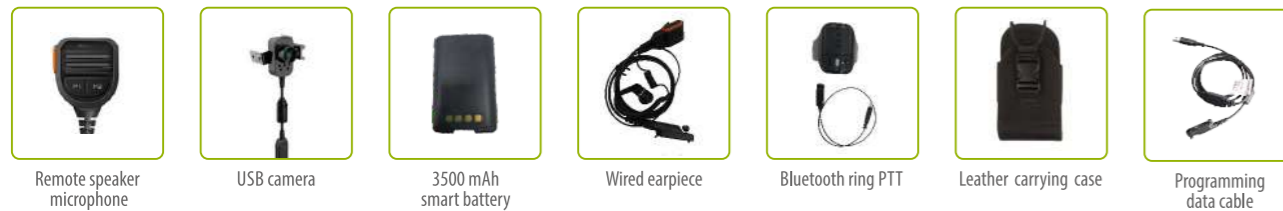


Audio, Video, and Image	
Microphone	3 mics. Dual-microphone noise suppression
Speaker	Rated power: 1W, Max: 2.5W
Video Shooting	1080P,30fps
Video and Image Format	H.263, P0, H.264, BP/MP/HP, MPEG-4, SP/ASP, DivX, 4x/5x/6x, VP8, VP9 JPG, GIF, BMP, PNG, WEBP
Audio Format	MP3, aacPlus, eAAC, AMR-NB, AMR-WB, G.711, Windows Media Audio, (WMA) 9/10 Pro
Environmental Standard	
Operating Temperature	-20℃ ~+60℃
Storage Temperature	-30℃ ~+70℃
Environmental Protection Requirement	RoHS/REACH
ESD	IEC 61000-4-2 (level 4); ±8 kV (contact discharge); ±12 kV (air discharge)
Dust and Water Proof	IP68
Anti-fall	1.2m
Certification	
Certification	CE/FCC/MIL-STD-810G

Standard Accessories



Optional Accessories



PDC550

Smart PoC Radio

- DMR Conventional + LTE
- Mission Critical Interactive Design
- Loud and Clear Voice Quality
- Reliable & Rugged Design





Hytera PDC550 Smart PoC Radio

Broadband and narrowband convergence

PDC550 enables the collaboration of multiple communication modes including broadband and narrowband networks as well as public and private networks in multiple scenarios. Users can not only hear but also see clearly. So they can calmly respond, control the situation, and make decisions in the shortest time.

Rugged and Compact design

With exquisite structural technology, IP68, military standard (MIL -ST8-810 G), 1.2m drop-proof design, PDC550 has no fear for kinds of harsh environment.

Open platform providing infinities

PDC550 provides high compatibility and security performance. Multiple applications can run on it. Open API allows third party developing customized applications such as OR code recognition, facial recognition and license plate recognition.

Loud and clear voice quality

With the AI-powered noise reduction and dual mic noise suppression technology and its powerful voice recognition function, human voice in noisy environment can be extracted effectively. Built-in 1W (up to 2.5W) speaker provides loud and clear audio quality for versatile voice service.

Friendly design

The 5-inch industrial-grade HD touch screen adopts the third-generation glass of Corning Gorilla Glass. It is visible even under strong light. The multi-touch screen can be touched even with gloves on and in rain. The back holding design and side anti-slip texture conform to ergonomics principles, ensuring more friendly and smooth operation.

Multiple protection mechanisms ensuring security

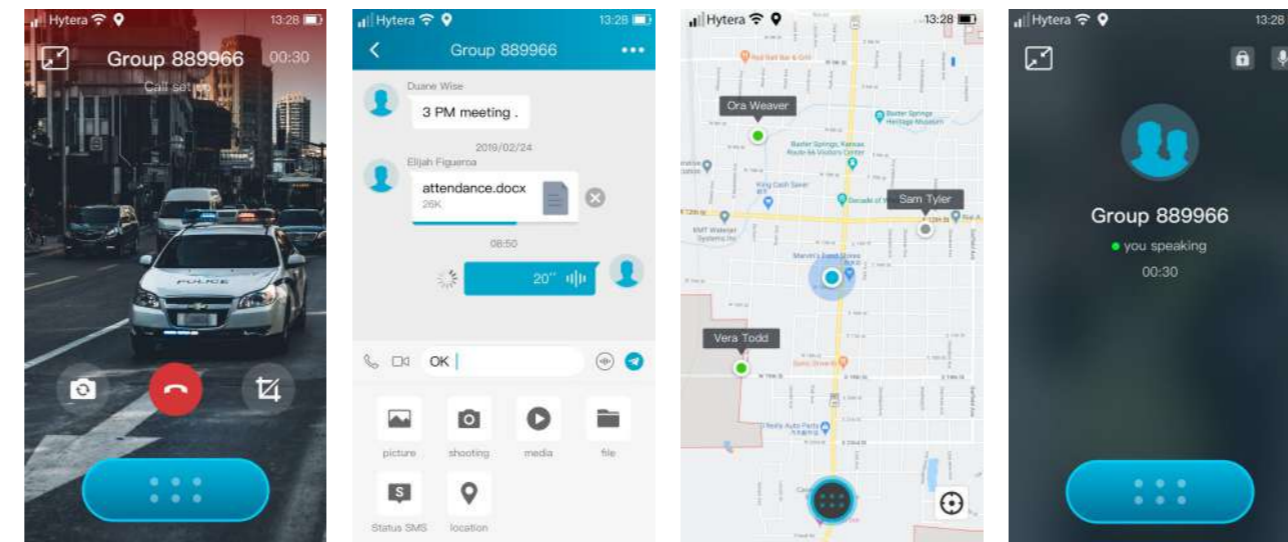
Communication security: The TF card slot design is used for communication and hardware encryption.
Application security: The radio uses professional MDM management software that can remotely control 100% terminal applications. All applications must complete signature authentication before uploaded to MDM, to eliminate malicious codes.

PoC Solution

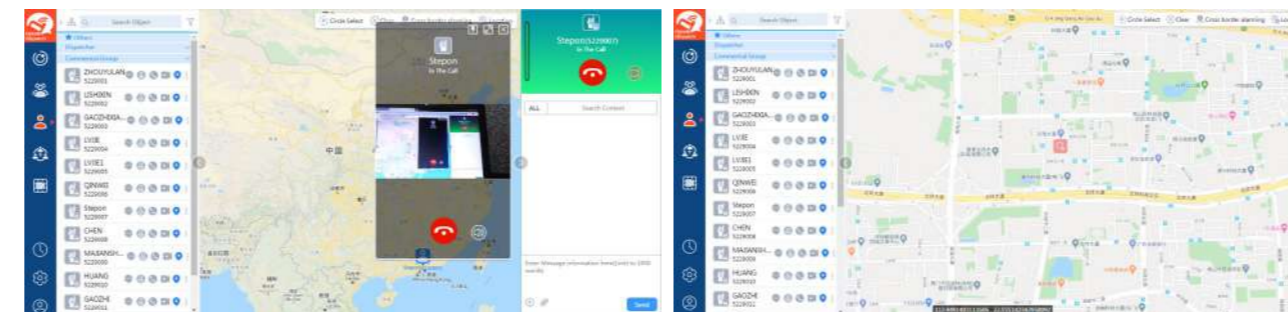
PoC Solution, centering on the Push-to-Talk over Cellular (PoC) service, is a public network PTT communication solution that provides PTT, full-duplex audio and video communication, and IM to meet requirements for different communication priorities. It also provides a complete set of clients, servers, and management platforms, to cover all service scenarios. This solution supports multiple communication modes, and has the advantages of high-quality communication, ease of deployment, economy, and security.

Multiple deployment modes are available for this solution. It can be deployed privately or operated as a public cloud, and can be deployed on various terminals. Its flexibility and ease of use can help customers rapidly solve video transmission problems.

Mobile Clients



Dispatch Station



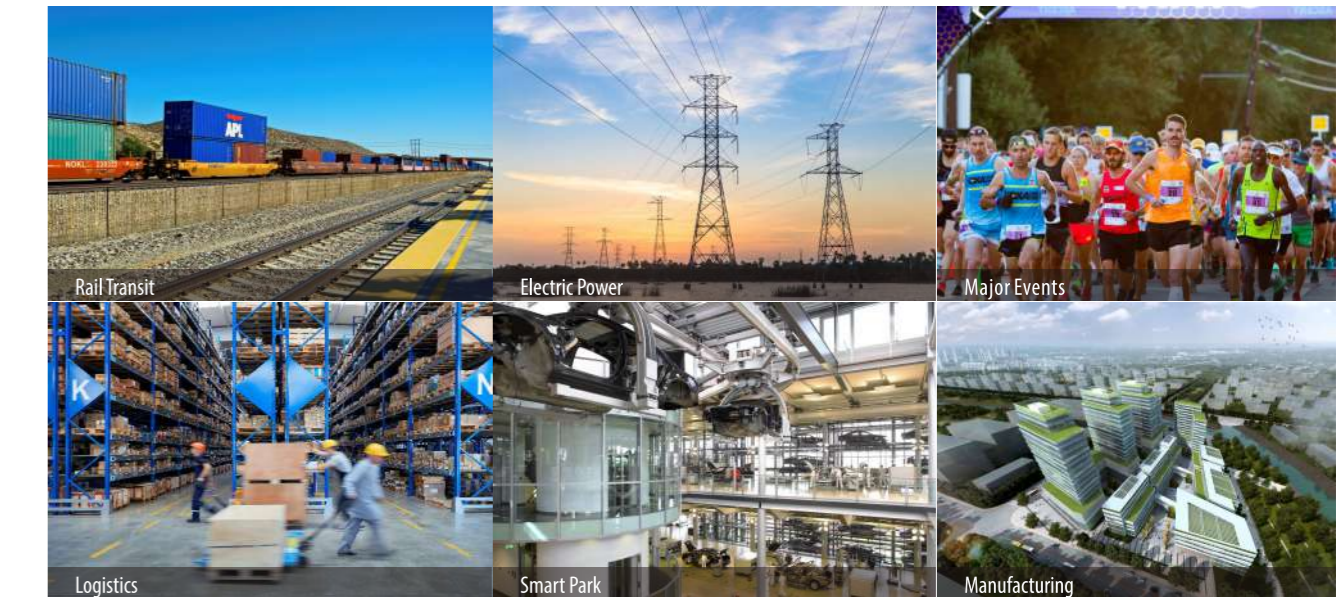
Video dispatch

Perform operations on terminal users' videos to implement real-time video pull, forcible pull, forwarding, environmental monitoring and video push.

GIS visualized dispatch

Through the position service, you can view terminal users' positions and tracks in real time, and perform map-based fast dispatch by using region selection calling and e-fence.

Applicable Industries



Parameter

Network		Hardware	
DMR Network	UHF:400-470MHz & 350-400MHz VHF:136-174MHz	Memory	3 GB RAM + 32 GB ROM , expandable memory (maximum 128 GB)
Public Network	Europe & Asia-Pacific & Africa & South Korea GSM: 850/900/1800/1900MHz TD-SCDMA: B34/B39 CDMA: BCO WCDMA: B1/B3/B5/B8 TDD-LTE: B38/B39/B40/B41 FDD-LTE: B1/B3/B5/B7/B8/B20/B26/B27/B28 America GSM:850/900/1800/1900MHz WCDMA:B2/B4/B5 TDD-LTE:B38 FDD-LTE:B2/B3/B4/B5/B7/B12/B13/B17/B26/B28	Dimensions	155 mm x 75 mm x 21.5 mm
		Weight	375 g (including battery, antenna, and back clip)
		Screen	5.0-inch HD touch screen, 1280x720 resolution
		Cameras	Rear 13 mega-pixel camera + front 5 mega-pixel camera
		Card Slots	3, 2*Nano SIM card slot, 1*Micro SD card slot
WLAN	2.4 GHz, 802.11b/g/n	Sensors	Gravity sensor, compass, distance sensor, optical sensor
Locating	GPS/AGPS/GLONASS/Galileo/BeiDou (shared for broadband and narrowband networks)	BT	BT 4.1 (shared for broadband and narrowband networks)
Channel Spacing	25/12.5KHz	NFC	Available(Payment is not supported)
TX Power	UHF: High power 4W/ Low power 1W VHF: High power 5W/ Low power 1W	External Interfaces	Hytera dedicated 13-pin interface, Charging interface for charger, Antenna interface (SMA interface, shared with Td5)
RX Sensitivity	Digital typical value: 110dBm/BER1% Digital limit value:-116dBm/BER1% Analog typical value: <0.28uv Analog limit value: <0.22uv	Key	5: 1*PTT, 2*programmable key, 1*alarm key, 1*power key
Inter-modulation	TIA603C > 70dB; ETS > 65dB	Battery	Standard 2400 mAh/optional 3500 mAh, 7.4V 2400mAh
Blocking	> 84dB	Battery Life	PoC mode: about 8-9 hours(10/10/80) & 24 hours(standby) DMR mode: > 12 hours(5-5-90 duty cycle)
Suppression of Spurious Response	TIA603C > 70dB; ETS > 70dB	Charging Mode	Charging with charger, 2 A charging
Adjacent Channel	12.5K/TIA603 > 60dB 25kHz/TIA603 > 70dB 12.5K/ETS > 60dB 25K/ETS > 70dB	Flashlight	Available
Frequency Stability	±0.5ppm	Volume Knob	Available (shared with the channel knob)
Audio Output Power	2.5W		
Audio Distortion	≤ 3%		